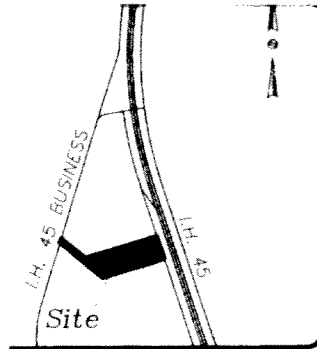


PLAT MAP



Vicinity Map

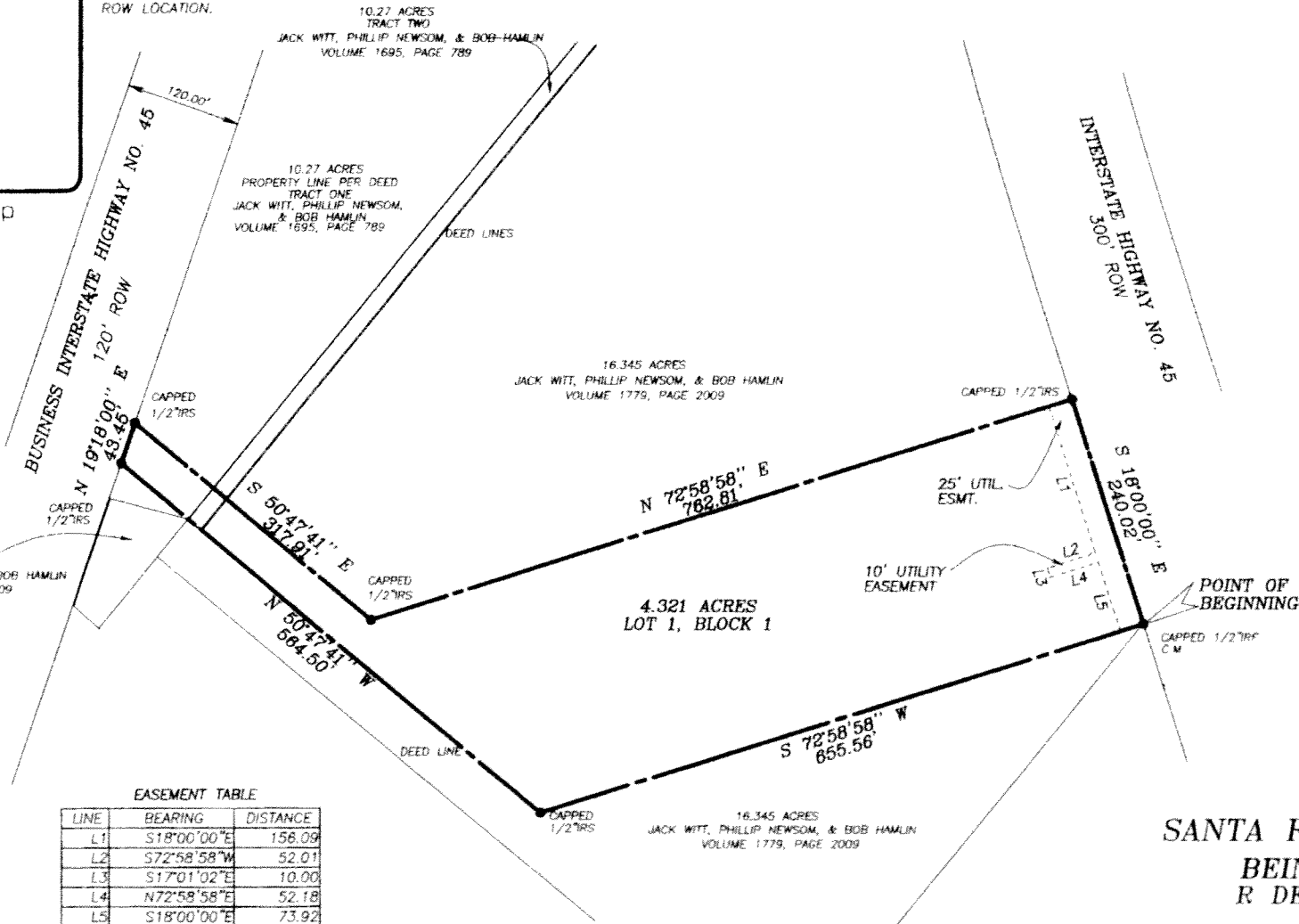
FOR BUSINESS INTERSTATE HIGHWAY NO. 45 AND INTERSTATE HIGHWAY NO. 45.

THE ROW ALIGNMENT FOR IH NO. 45 AND BUSINESS IH NO. 45 WAS ESTABLISHED USING ROW MARKERS FOUND NORTH AND SOUTH OF THE SITE. WE ALSO USED THE CENTER LINE ALIGNMENT OF BUSINESS IH NO. 45 TO AID IN THE ESTABLISHMENT OF THE ROW LOCATION.



1" = 100'

16.345 ACRES
JACK WITT, PHILLIP NEWSOM, & BOB HAMLIN
VOLUME 1779, PAGE 2009



EASEMENT TABLE

LINE	BEARING	DISTANCE
L1	S18°00'00"E	158.09
L2	S72°58'58"W	52.01
L3	S17°01'02"E	10.00
L4	N72°58'58"E	52.18
L5	S18°00'00"E	73.92

SANTA REGINA
BEING 4.3
R DE LA PI